



QUANTUM™ 1000

One-Flavor, Post-Mix Juice Dispenser



FEATURES

- Narrow profile is 10³/₄" (27.28 cm) wide
- High-performance peristaltic pump and a unique mixing valve assure elimination of stratification
- Large concentrate capacity with optional 3 gallon (11.4 L) refillable concentrate tank
- Tamper resistant and disposable packaging
- Modular component design provides ease of sanitation and service
- New contemporary cabinet design is a blend of attractive black plastic and sturdy stainless steel
- Easy-to-adjust mixing system controls and maintains a consistent finished drink
- Lighted merchandiser is standard
- Push button or programmable portion controlled dispensing available



QUANTUM™ 1000

Technical Specifications:

DESCRIPTION

Model SLJ1000-1

- 115 volts, 60 Hz, 9.43 amps
- 220 volts, 50 Hz, 5 amps

REFRIGERATION

- 1/3 H.P. hermetically sealed system
- R-134a refrigerant 5.0 oz. (155 g)

CABINETRY

Stainless steel

DISPENSER DIMENSIONS

Height (with 4" legs)34½" (87.56 cm)
 Width10¾" (27.28 cm)
 Depth27¼" (69.15 cm)

WEIGHT

Dry weight110 lbs. (52.21 kg)
 Shipping weight125 lbs. (59.02 kg)

RECOMMENDED CLEARANCE

4" (10.16 cm) in back, 12" (30.48 cm) on top, and open to the front for air circulation

WATER CONNECTION

¾" (.95 cm) SAE male flare fitting on dispenser

CONCENTRATE STORAGE

384 oz. (11.4 L)

WATER SUPPLY REQUIREMENTS

- 80 psi (5.6 kg/sq. cm) maximum static pressure
- 20 psi (1.4 kg/sq. cm) minimum dynamic pressure

COOLING CAPACITY

Continuous 5 oz. (147.85 ml) drinks at 4 per minute with 75°F (24°C) ambient and 40°F (5°C) concentrate without exceeding 45°F (7°C) drink temperature

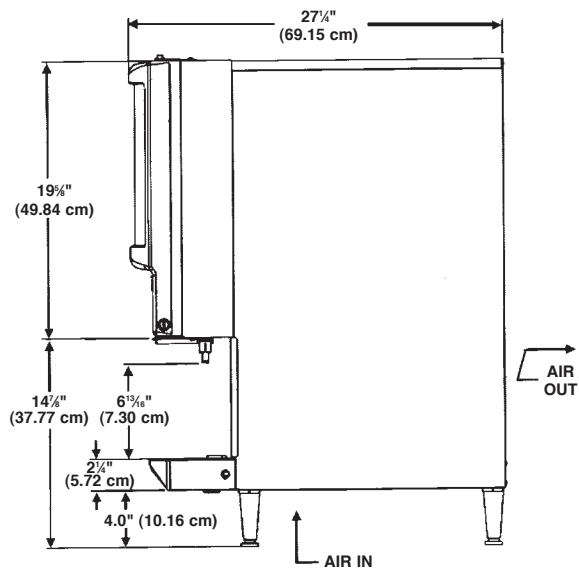
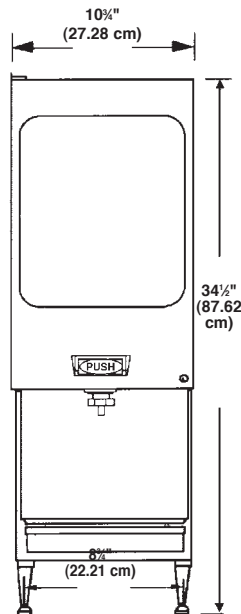
FLOW RATE

Adjustable water flow rate from 1.6 oz./sec. (47.31 ml/sec.) to 2.2 oz./sec. (65.05 ml/sec.); handles 2 + 1 through 7 + 1 concentrate

OPTIONAL ACCESSORIES

- H.D.P.E. refillable concentrate container
 - 160 oz. (4.7 L)
 - 384 oz. (11.4 L)
- Illuminated merchandiser
- Portion control
- Sanitizing tank kit
- Dispense key lock
- Extended splash panel kit (lowers drink tray)

AGENCY LISTINGS



For more information or to place an order, contact your sales representative or authorized distributor.

www.cornelius.com

In the US:

Phone: 1-800-238-3600
 Fax: 1-800-535-4235

Outside the US:

Phone: 1-763-421-6120
 Fax: 1-763-422-3297

IMI Cornelius Inc.

One Cornelius Place
 Anoka, MN 55303-6234
 USA